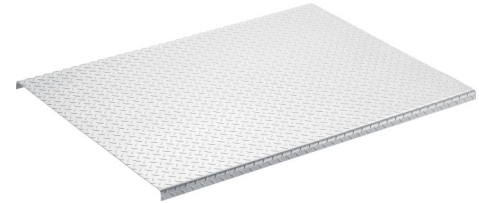
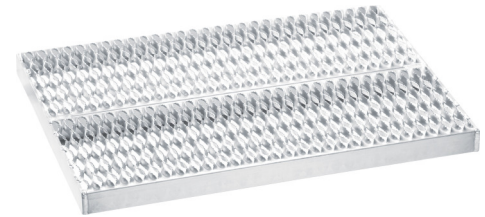


PROTECH FRAME DECK COVER MOUNTING KITS

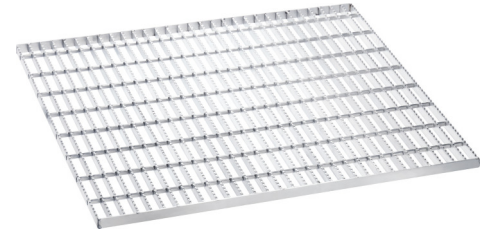
ProTech deck covers are available in three styles: Aluminum Grate, Aluminum Diamond Plate or Aluminum Grip Strut. The kits listed below are made specifically to mount your style deck cover. If these aren't what you need, call or email us. We'll customize it for you.



Aluminum Diamond Plate



Aluminum Grip Strut®



Aluminum Grate

SHOWN: 35-9900

DECK COVER MOUNTING KIT

Diamond plate aluminum, hidden mount, with stiffeners. Mounting hardware included. 48"L x 34"W.

DECK COVER MOUNTING KITS		LBS
35-9900	MOUNTING KIT, DECK COVER UP TO 4 FT LG	4
35-9905	MOUNTING KIT, DECK COVER OVER 4 FT LG	5
35-9910	MOUNTING KIT, GRATE STYLE FRM DK CVR	4
35-9922	MOUNTING KIT, GRIPSTRUT DECK COVER	5